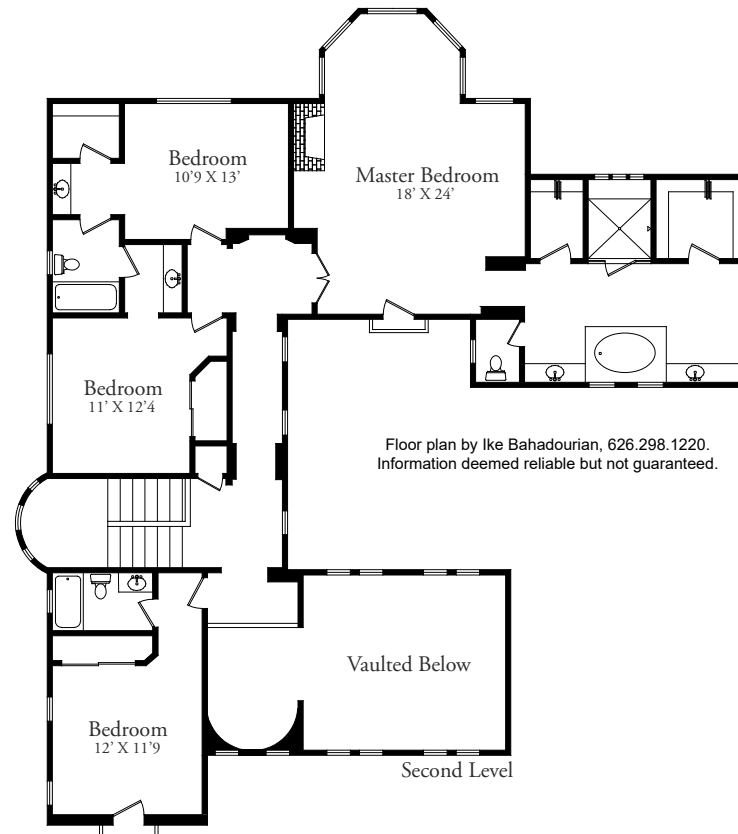
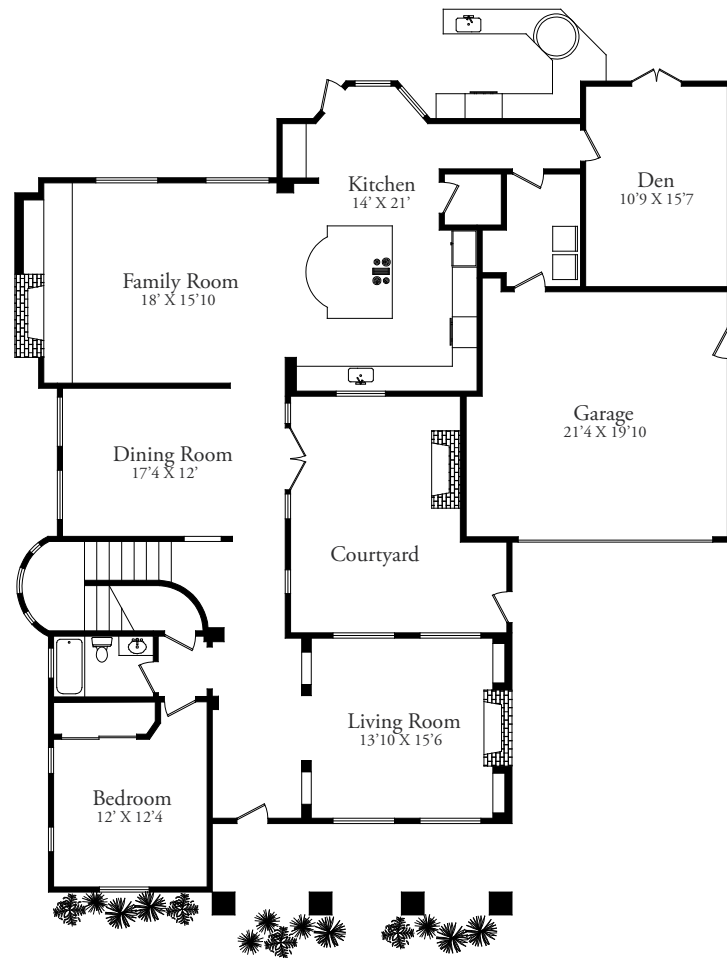




559 Chaparral Court

LA VIÑA, ALTADENA



BERKSHIRE HATHAWAY
HomeServices
California Properties

**VIRTUAL REALITY
3D TOUR**



Tia Rowland

CalBRE#: 00543041

(626) 685.1114

Tia@RowlandPartners.com



Jerry Rowland

CalBRE#: 02003589

(626) 583.5054

Jerry@RowlandPartners.com

ROWLAND PARTNERS
REAL ESTATE



5
BEDROOMS

4
FULL BATHS

3,881 SQ. FT.
LIVING AREA

14,523 SQ. FT.
LOT SIZE

\$298/MO.
LA VINA HOA

SOLAR PANELS
OWNED & INCLUDED

FAST ELECTRIC
CAR CHARGER

POOL & OUTDOOR
KITCHEN / PIZZA OVEN

DROUGHT TOLERANT
LANDSCAPING

2 ZONE
A/C SYSTEM



Atowering majestic oak tree graces the front yard of this La Vina 'Revival' floor plan, which rarely comes on the market. A mix of European touches and contemporary flair emphasizes clean lines, natural light and an open floor plan. There are 5 generously sized bedrooms and 4 full baths. The main level provides convenient flow between an office/bedroom, full bath, formal living room, formal dining room, center-island kitchen with a casual dining area, family room and bonus room. French doors in the formal dining room lead out to an enclosed courtyard with a cozy fireplace and a lovely wall fountain. More French doors in the back of the house lead out to a private backyard of rare proportion which showcases an amazing blend of entertaining space and functionality. There is a pool, bubble fountain, outdoor kitchen that has a grill with side burners, wood-burning pizza oven, refrigerator and sink. A custom pergola has a fan as well as a heating element so you can enjoy being outside any time of year. Upstairs is a master suite with mountain views, fireplace & seating area and a full bath with dual sinks and walk-in closets. Two other bedrooms flank a full bath in 'Jack-and-Jill' style and there is yet another bedroom and full bath perfect for guests. Solar panels are owned and will be conveyed with the sale! An electric car charger speed-charges with great efficiency. Drought-tolerant landscaping expands upon the eco-friendly theme.

